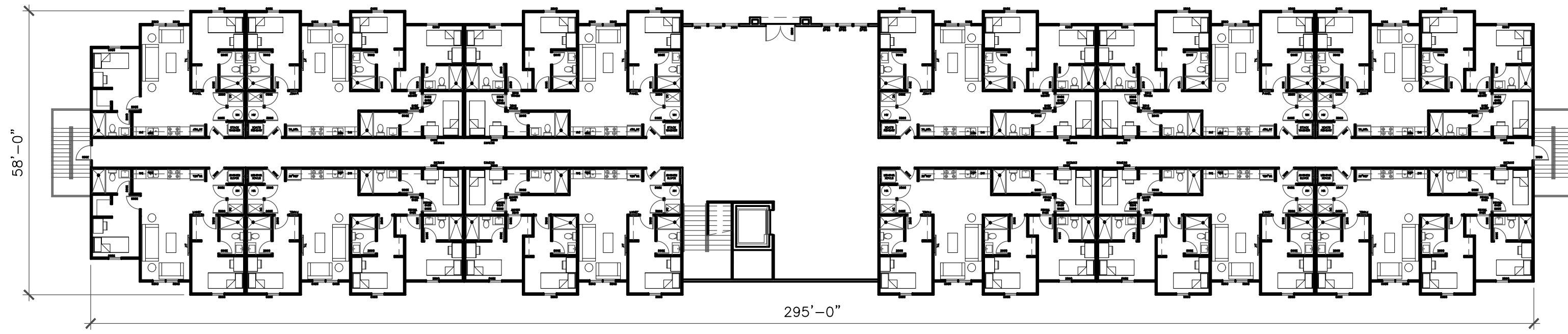


1 UNIT 1: 68,070sf
SCALE © 1"=20'



2 UNIT 2: 48,330sf
SCALE © 1"=20'

PROPRIETARY RIGHTS CLAUSE: INFORMATION AND DATA CONTAINED ON THIS DRAWING IS CONFIDENTIAL AND SHALL NOT BE USED WITHOUT PRIOR WRITTEN PERMISSION BY ANY ENTITY NOT HAVING A CONTRACTUAL RELATIONSHIP WITH THE DESIGNER. THIS LEGEND SHALL BE MARKED ON ANY REPRODUCTIONS IN WHOLE OR IN PART: BART MILLER © COPYRIGHT 2008

NORTHWEST FLORIDA STATE
STUDENT HOUSING
NICEVILLE, FLORIDA

DATE: _____ REVISION DATE: _____
DESIGNED BY: BART MILLER
DRAWN BY: BART MILLER
CHECKED BY: _____

SHEET NO.
A3

BART MILLER

SANTA ROSA BEACH, FLORIDA

PH: 850 419 1977
EMAIL: bart30a@yahoo.com