

7.1 ANTIMICROBIAL STEWARDSHIP



BROWARD HEALTH PHARMACY ANTIMICROBIAL STEWARDSHIP

Intervention Type	Q3 2021	4 th Q4 2021	Q1 2022	Q2 2022	Total
De-escalation	341	261	276	249	1,127
Dose adjustment	2,902	2,945	2,765	2,425	11,037
Bug-Drug mismatch	74	78	90	91	333
IV to PO conversion	456	260	424	420	1,560
Therapeutic duplication	88	92	69	62	311
Totals	3,861	3,636	3,624	3247	14,368

ANTIMICROBIAL STEWARDSHIP INITIATIVES

2022-2023

Updated Penicillin Desensitization Protocol

MRSA ICU Decolonization Protocol

Implementation of Disease State Specific Powerplans to Align with Joint Commission Standards: PNA, H.Pylori, Sepsis

Implementation of Pharmacist Driven Procalcitonin Protocol-All 4 Sites

Leveraging Cerner to default duration of antibiotics within select powerplans

C.Diff and Surgical Site Infection Interdisciplinary Process Improvement Teams

Evaluation of New Formulary Gram Negative Agents and Place in Therapy

Standardization of Restriction Process for Antimicrobials

Continual Evaluation of Utilization of Restricted Antimicrobials

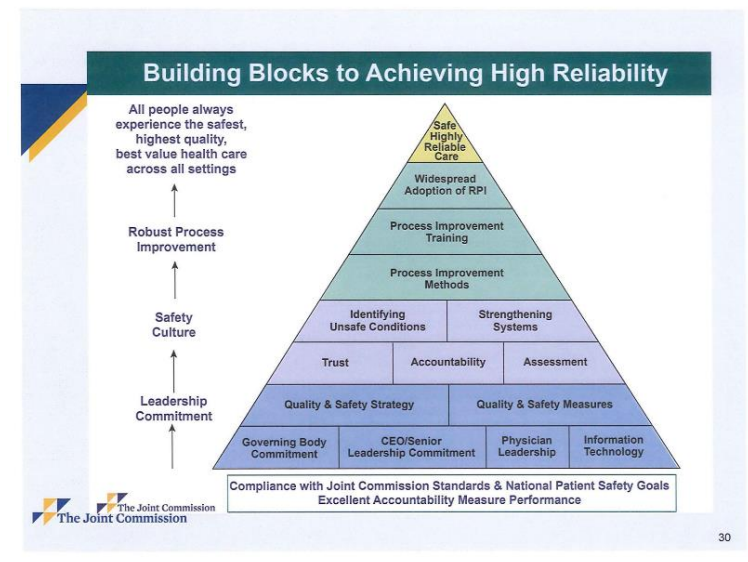
Joint Commission Updated Standards Gap Analysis

7.2 INFECTION CONTROL & ACTION PLAN



HIGH RELIABLE ORGANIZATION

- Regional Chief Medical Offices, Infection Control Physicians, Quality Leaders & Staff Epidemiologists
- Transformational Change
 - Leadership
 - Safety Culture
 - Robust Process Improvement
- Commitment to Zero Harm



STANDARDIZATION

- District-wide Infection Control Plan
 - Standardize approach to emerging threats
- Standardize Products & Protocols
- Intense Analysis for every event
 - At local level, evaluate processes, track & trend
- Unified Goals- Balance Score Card

HIGH RELIABLE JOURNEY- CHASING ZERO!

	CLABSI	CAUTI	CDIFF	MRSA
FY19	34 (40)	42 (35)	83 (136)	22 (15)
SIR	0.86	1.20	0.61	1.51
FY20	23 (38)	25 (38)	74 (178)	20 (22)
SIR	0.60	0.65	0.42	0.93
FY21	32 (42) (15 Covid)	28 (44) (4 Covid)	66 (190)	20 (21)
SIR	0.75	0.63	0.35	1.02
FY22	29 (46)	21 (48)	45 (219)	12 (23)
SIR	0.63	0.44	0.21	0.54

PROCESS

- Central Line Associated Blood Stream Infection (CLABSI)
 - 29 clabsi out of 38556- line days
 - Utilization, line location, LOS, care & maintenance
- Catheter Associated Urinary Tract Infection (CAUTI)
 - 21 cauti out of 27907 Foley days
 - Utilization, HOUDINI Protocol, LOS, care & maintenance
- Multi-Drug Resistant Organisms (MDRO)
(338250 patient days)
 - C Diff – 45 (219 predicted)
 - MRSA – 12 (23 predicted)
 - Early Identification- POA vs. HAC

OUTCOMES

- Chasing Zero -Benchmark & Thresholds
- Balance Score Card
- Evidence based practice review
- Accountability in practice
 - Onboarding & annual competence
- Improve Public Reporting
 - CMS Star Rating, Leapfrog, & Value Based Purchasing

7.3 CMS STAR RATING UPDATE



JULY 2022 DATA PERIODS

- Mortality Q3 18 to Q2 21
- Readmission Q3 18 to Q2 21
 - All cause Q320 to Q221
- Safety of Care Calendar Year 2021
- Patient Experience Calendar Year 2021
- Timely & Effective Calendar Year 2021

CMS STAR RATING JULY 2022

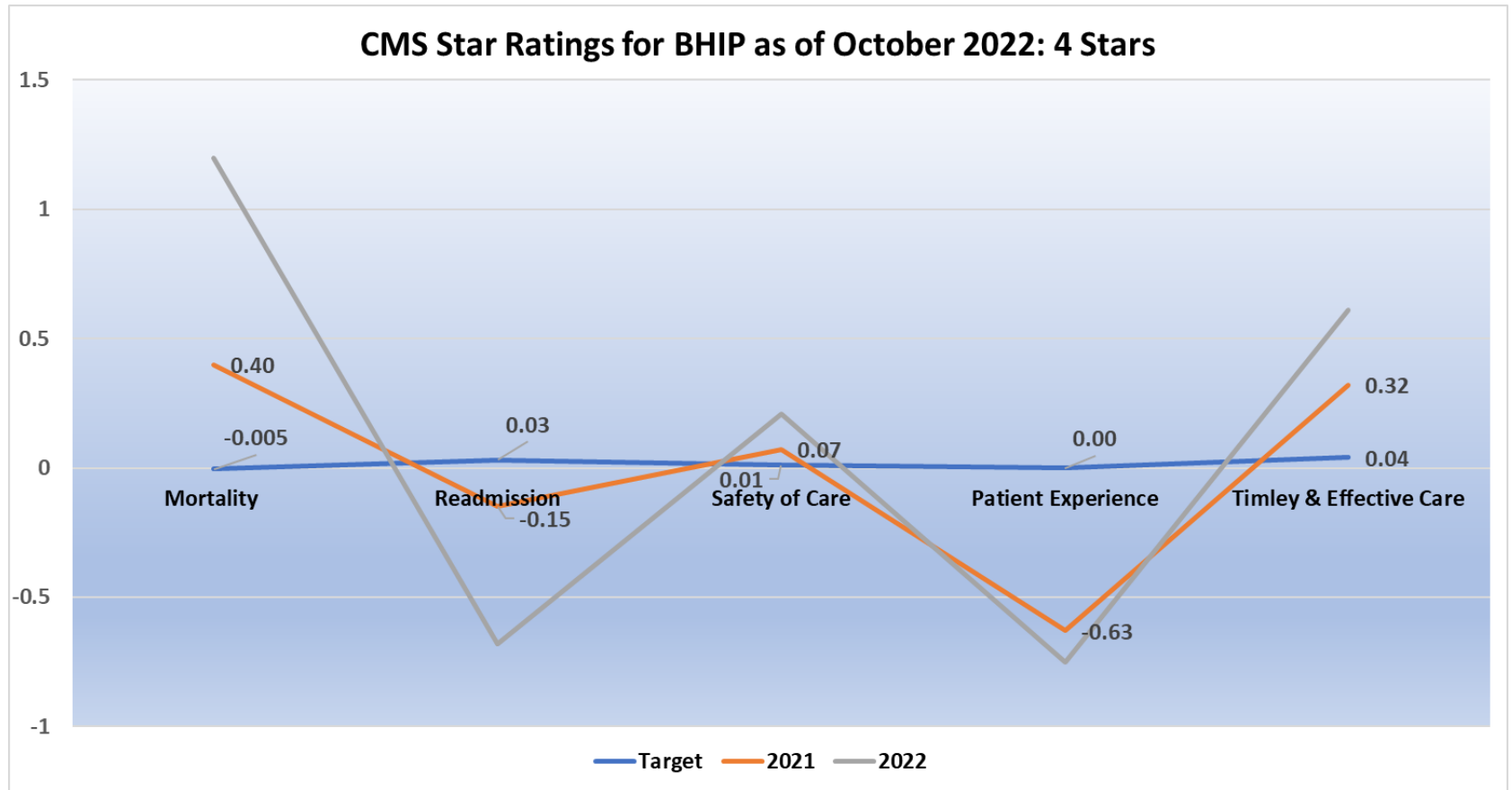
BHIP 4 Stars (2021-4)

BHCS 2 Stars (2021-3)

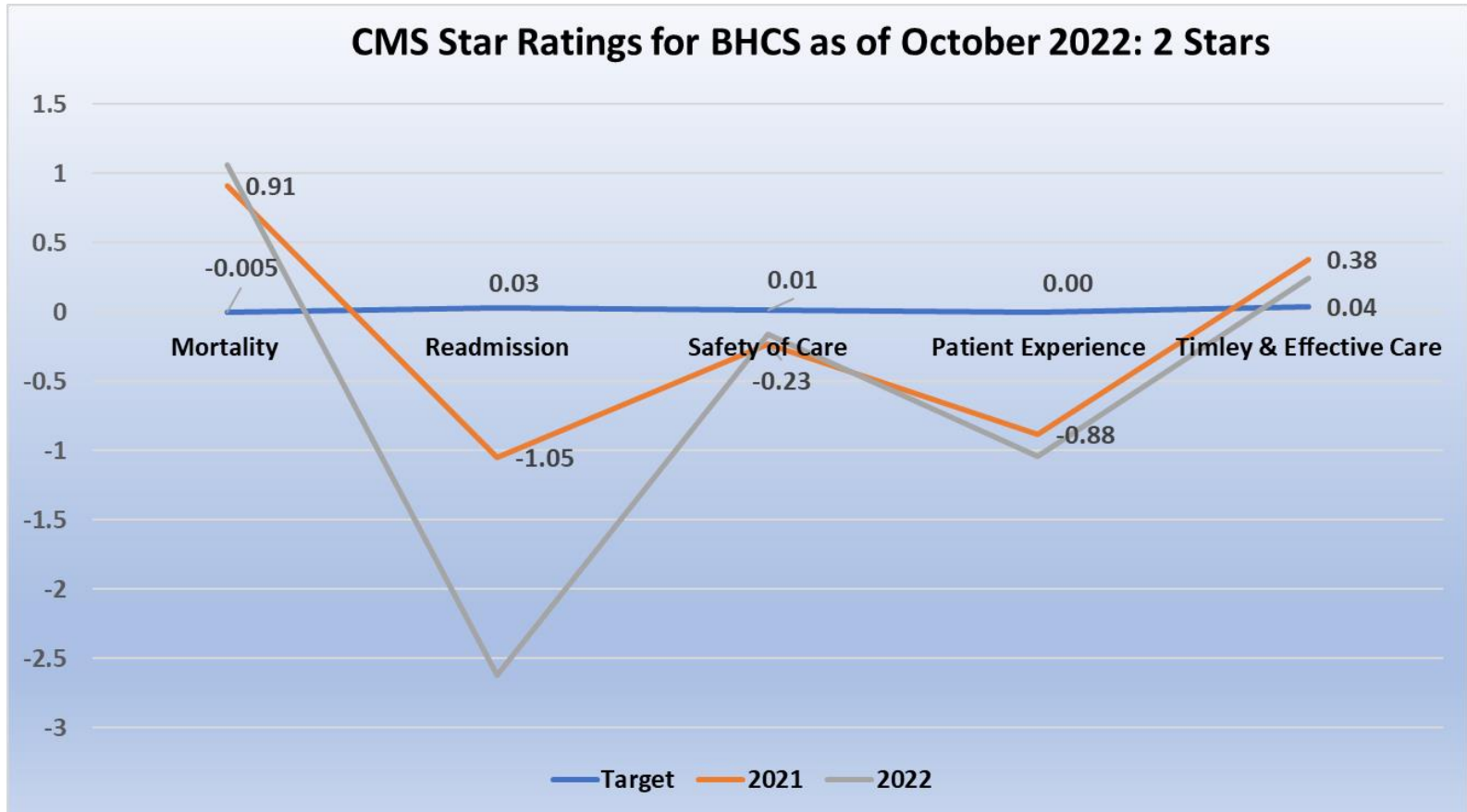
BHMC 2 Stars (2021-2)

BHN 2 Stars (2021-2)

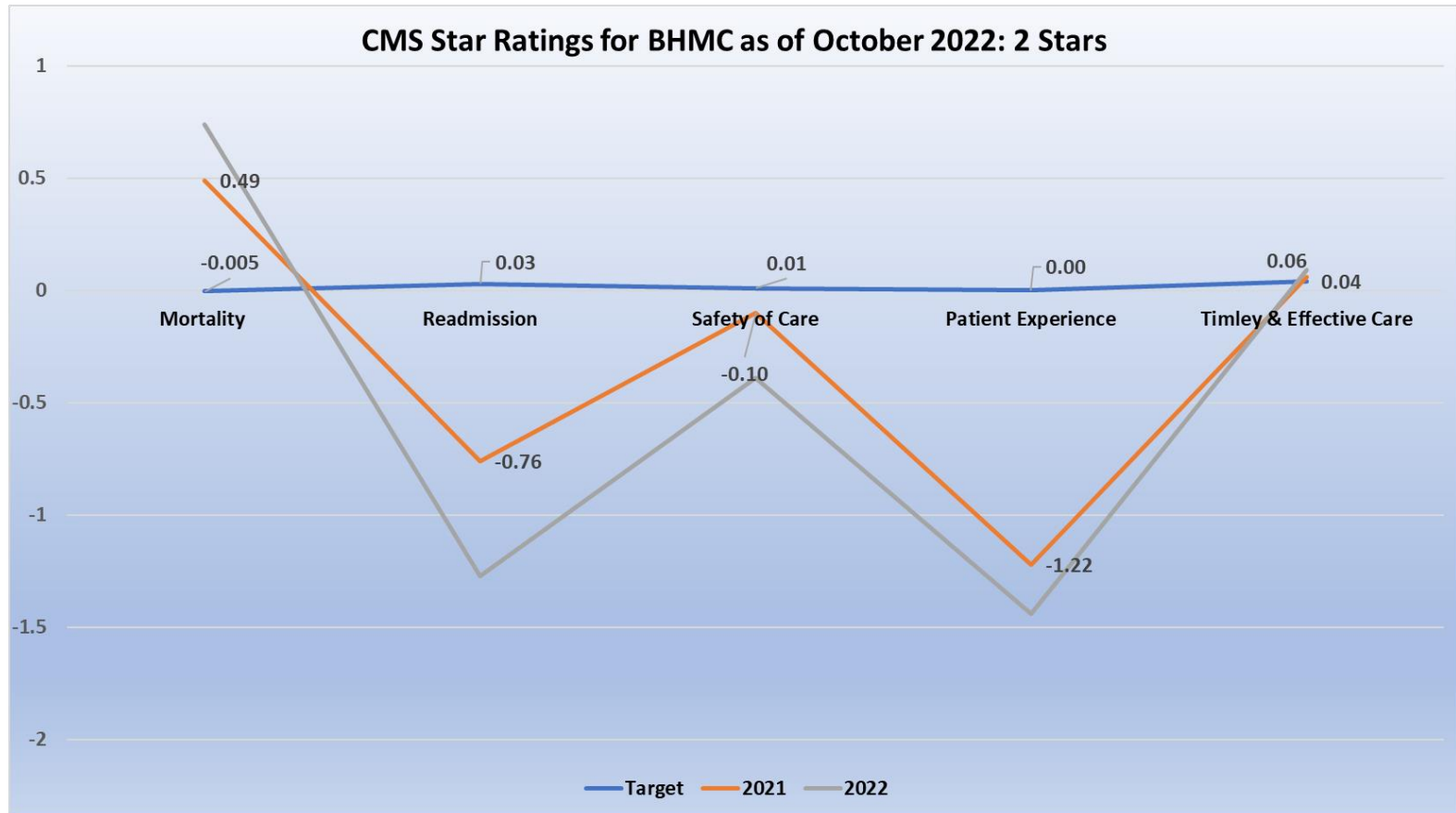
BHIP CMS STAR RATINGS



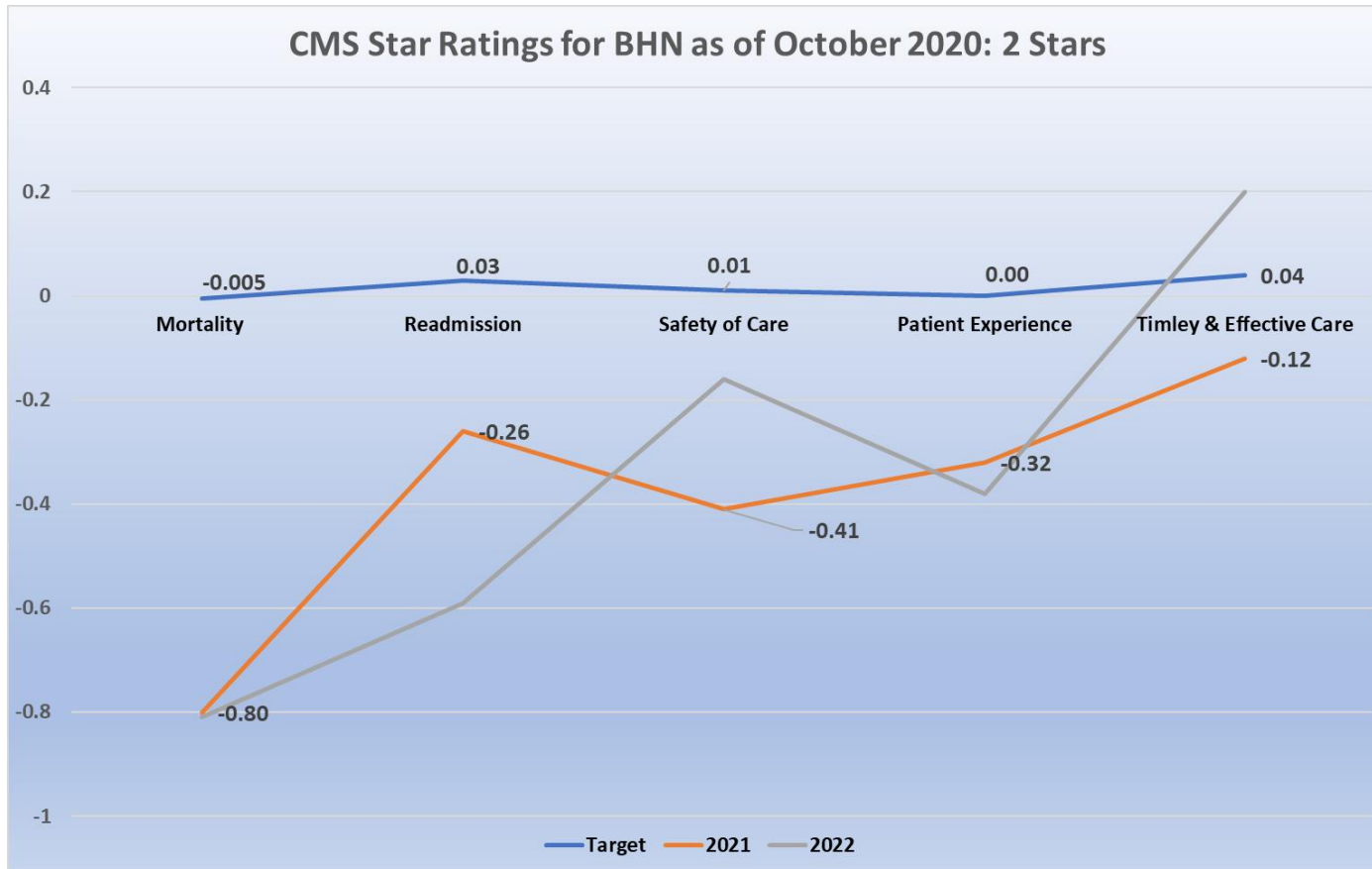
BHCS CMS STAR RATINGS



BHMC CMS STAR RATINGS



BHN CMS STAR RATINGS



7.4 US NEWS & WORLD REPORT UPDATE



2022 METHODOLOGY

- **Outcomes & Experience** **37.5%**
 - Mortality, DC patients to home, Length of stay, Volume, Influenza rates for staff and physicians, vaccine rates for patients
- **Structure** **30%**
 - Nurse Staffing, Intensivist, technologies, services offered
- **Expert Opinion** **24.5%**
 - physician vote in the Doximity platform where they would send patients, get care, send family etc
- **Pt Experience** **5%**
- **Transparency** **3%**
 - Recognized programs for Cancer (NCI) and (FACT) , Neuro (NAEC), Magnet Hospital, geriatrics (NIA), trauma centers

2022 US NEWS: HIGH PERFORMING

BHMC

High Performing in

- COPD
- Heart Attack
- Heart Failure
- Kidney Failure
- Stroke

2022 US NEWS: HIGH PERFORMING

* NEW IN 2022

BHCS

High Performing in

- **COPD &**
- **Kidney Failure**

BHIP

High Performing in

- **COPD***

BHN

High Performing in

- **Stroke**
- **Hip Replacement**
- **COPD***
- **Diabetes***
- **Kidney Failure***