

7.1.6 READMISSIONS



READMISSIONS ACTION PLAN

Discharge Process

- D/C education to patient & caregiver
- Follow up appointment made by CM
- Discharge med packets: ABX, Rescue inhaler and Medrol dose packs.

High Risk Readmissions

- Readmission Assessments implemented in Cerner.
- High Risk Daily census sent to CM staff daily.
- Implementation of discharge disposition with readmission.
- CM & CMO Disease specific readmissions teams.
- Intense Analysis data drill down of opportunities.

Transition of Care

- Readmission follow up calls.
- CM referrals to Pop Health via Ensocare.
- CHF & COPD task forces appointment center for follow up care.
- Business cards for appointment center for BHPG primary and specialty care referrals.

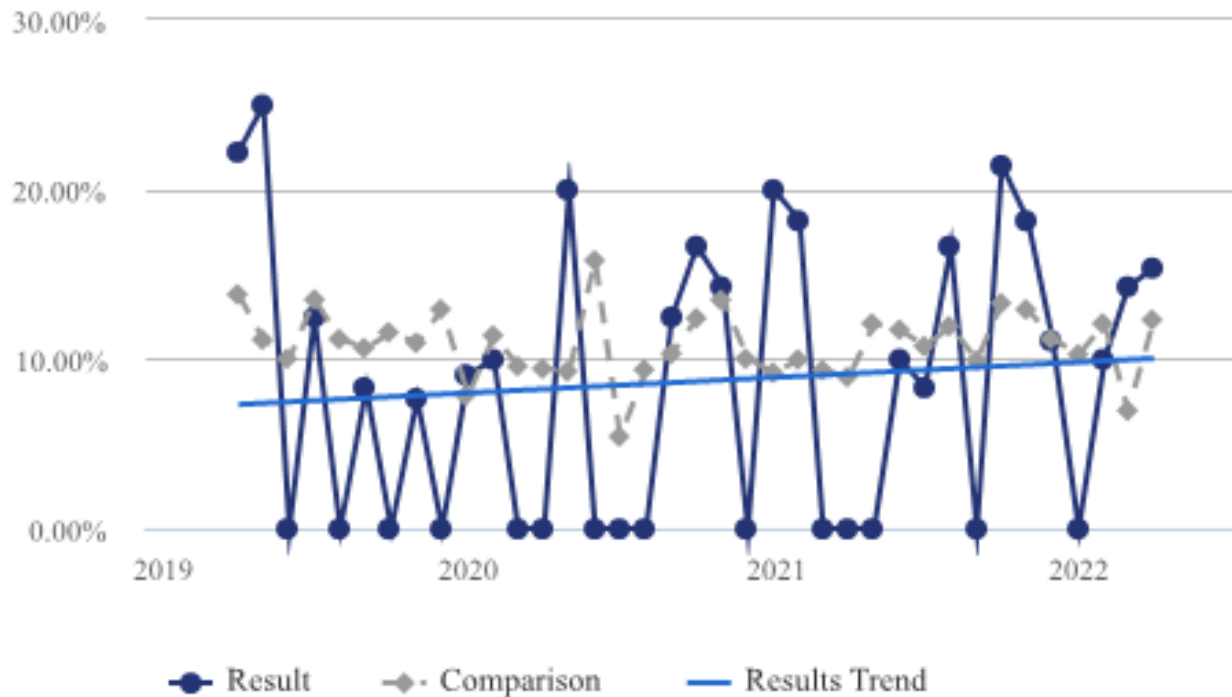


Centralized Access Center

1608 S.E. 3rd Ave., Suite 206 • Fort Lauderdale, FL 33316
Schedule an appointment: t 954.759.7500 f 954.759.7510

BH SYSTEMWIDE ACUTE MYOCARDIAL INFRACTION

% 30 Day Readmits w/ Excludes (Any APR-DRG) - System-AllPhysicians



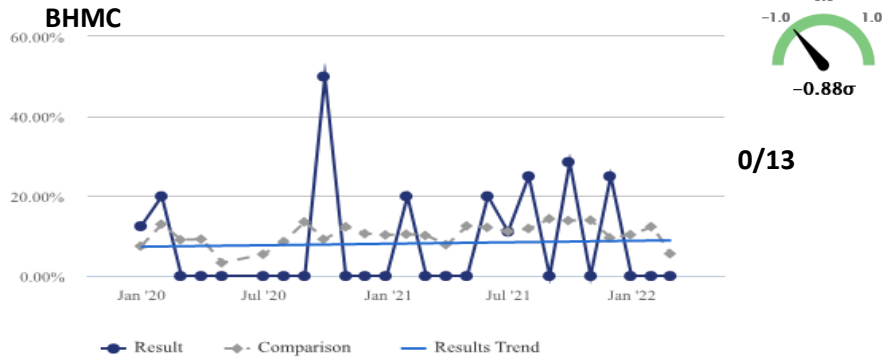
National Observed
Rate 15.7%

Apr 2019 – Apr 2022
BH Observed Rate
8.9%

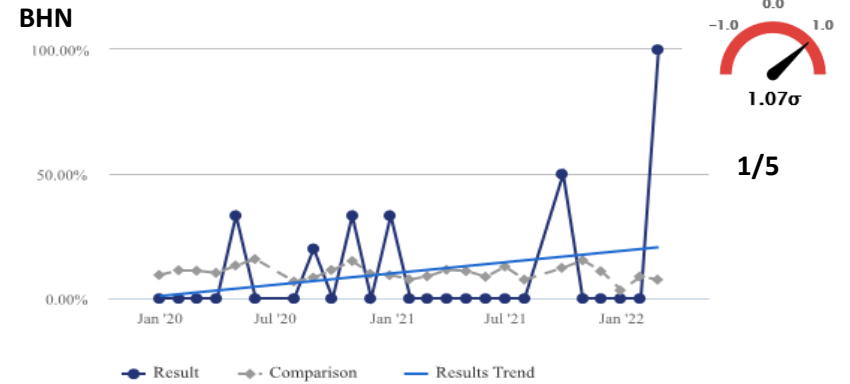
AMI Medicare Readmissions 1st Q 2022

National Observed Rate 15.7%

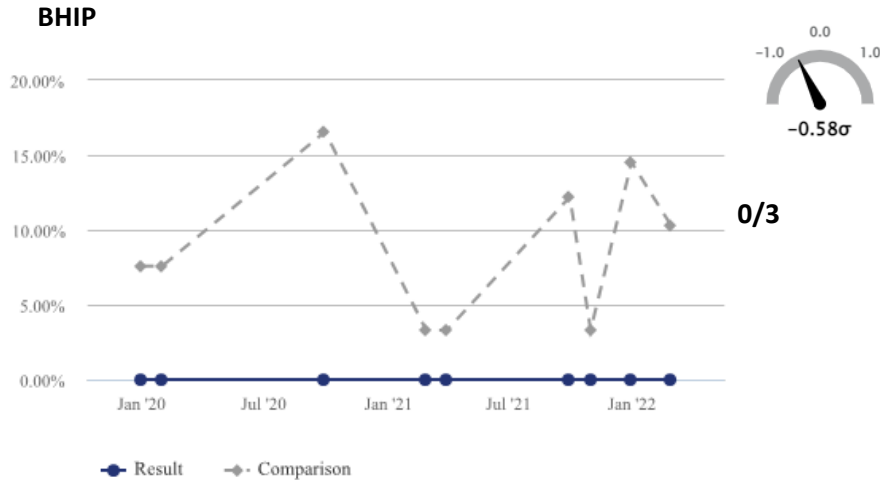
% 30 Day Readmits w/ Excludes (Any APR-DRG) - System-AllPhysicians



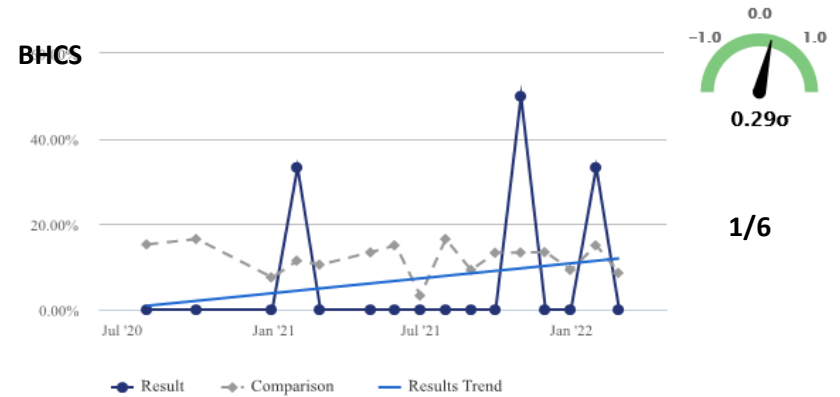
% 30 Day Readmits w/ Excludes (Any APR-DRG) - System-AllPhysicians



% 30 Day Readmits w/ Excludes (Any APR-DRG) - System-AllPhysicians

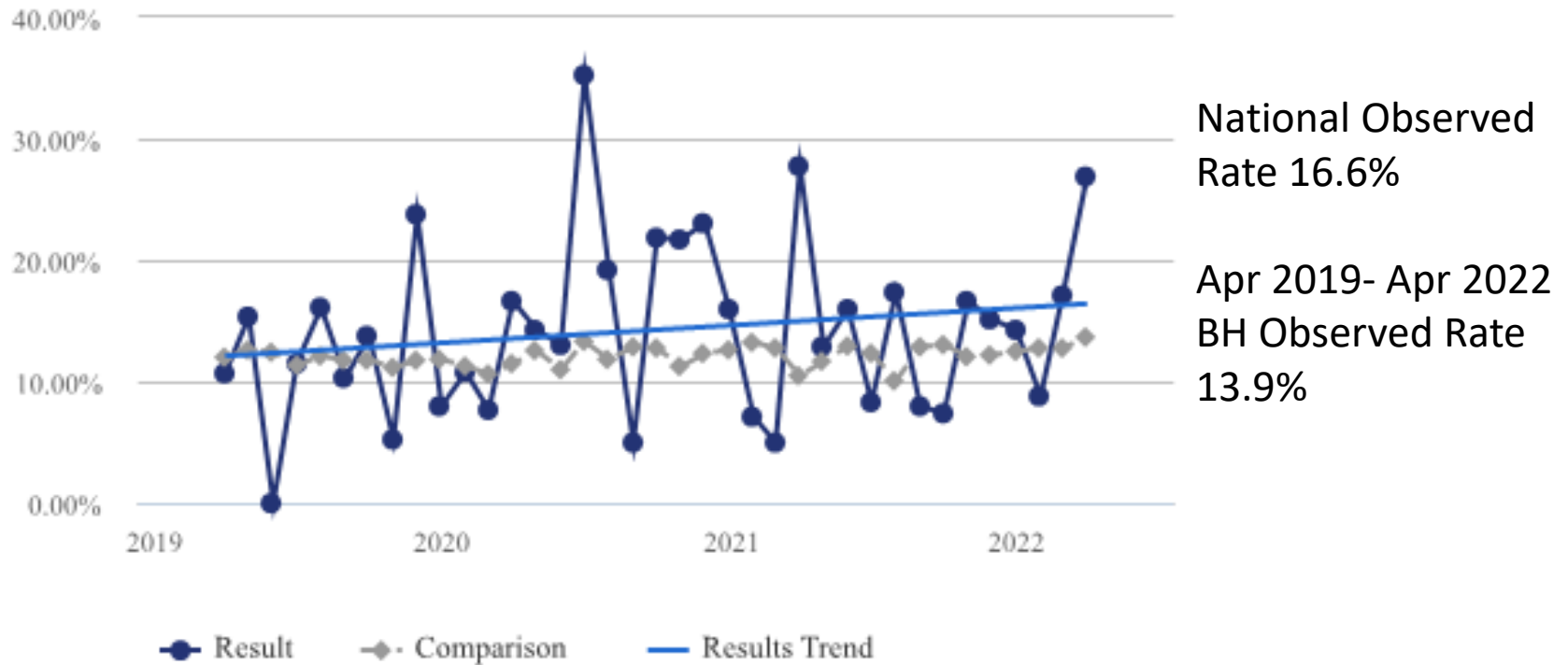


% 30 Day Readmits w/ Excludes (Any APR-DRG) - System-AllPhysicians



BH SYSTEMWIDE PNEUMONIA

% 30 Day Readmits w/ Excludes (Any APR-DRG) - System-AllPhysicians

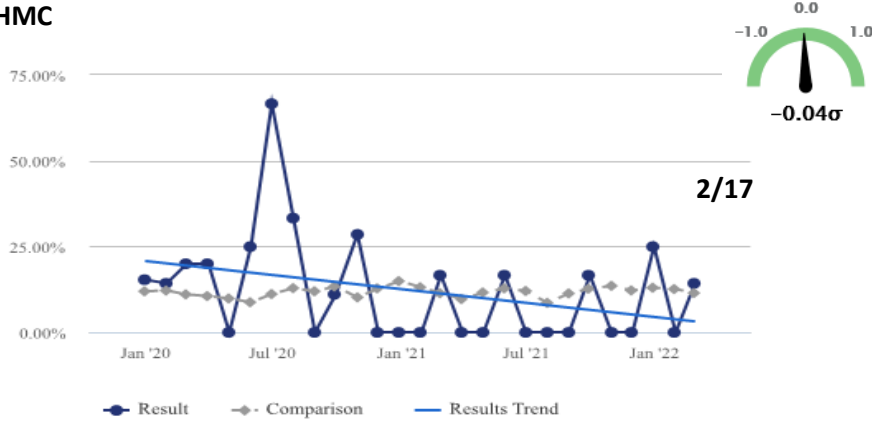


PN Medicare Readmissions 1st Q 2022

National Observed Rate 16.6%

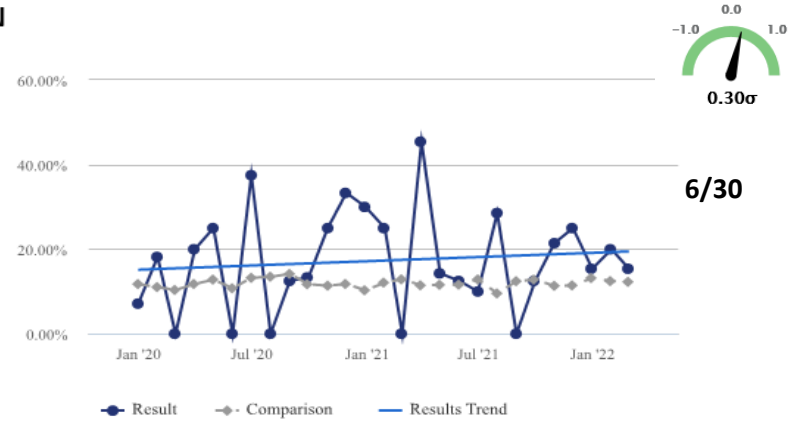
% 30 Day Readmits w/ Excludes (Any APR-DRG) - System-AllPhysicians

BHMC



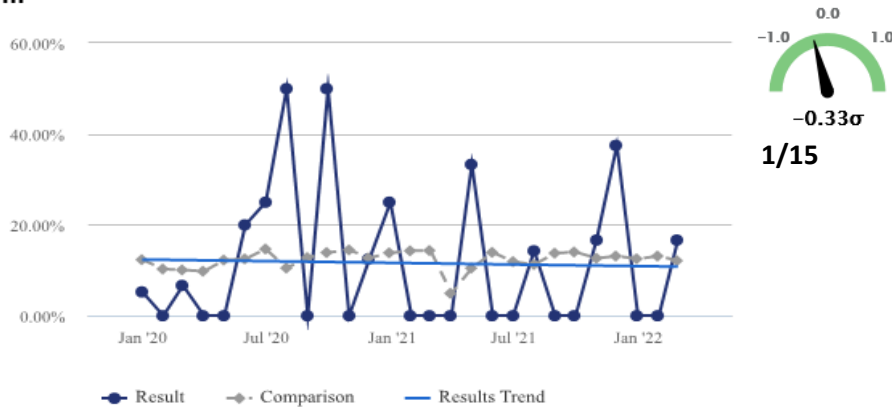
% 30 Day Readmits w/ Excludes (Any APR-DRG) - System-AllPhysicians

BHN



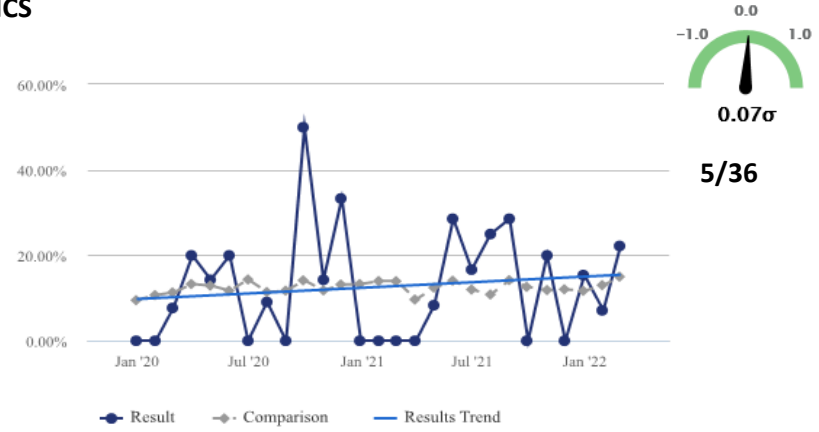
% 30 Day Readmits w/ Excludes (Any APR-DRG) - System-AllPhysicians

BHIP



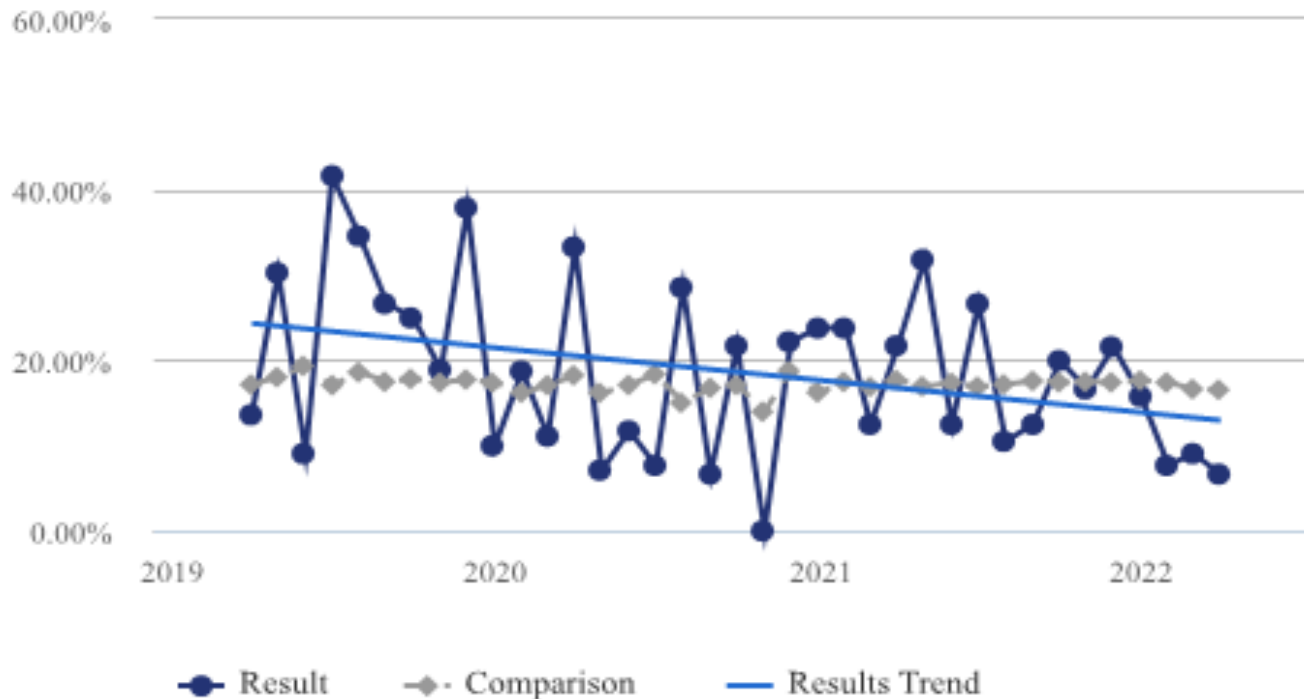
% 30 Day Readmits w/ Excludes (Any APR-DRG) - System-AllPhysicians

BHCS



BH SYSTEMWIDE HEART FAILURE

% 30 Day Readmits w/ Excludes (Any APR-DRG) - System-AllPhysicians



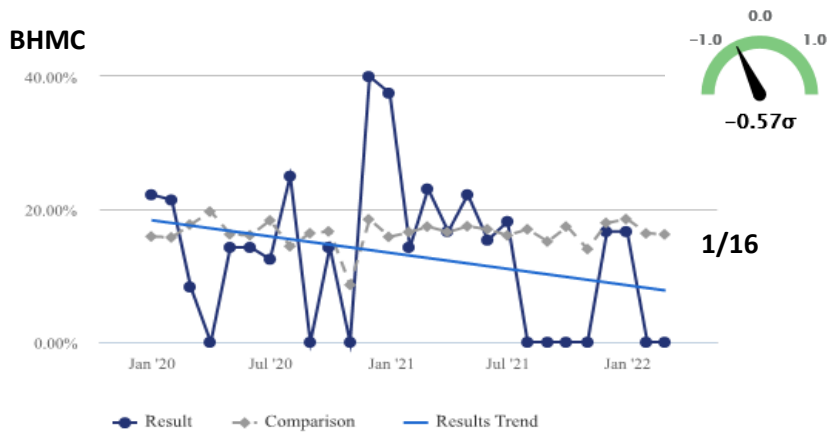
National Observed Rate 21.7%

Apr 2019- Apr 2022
BH Observed Rate 19.3%

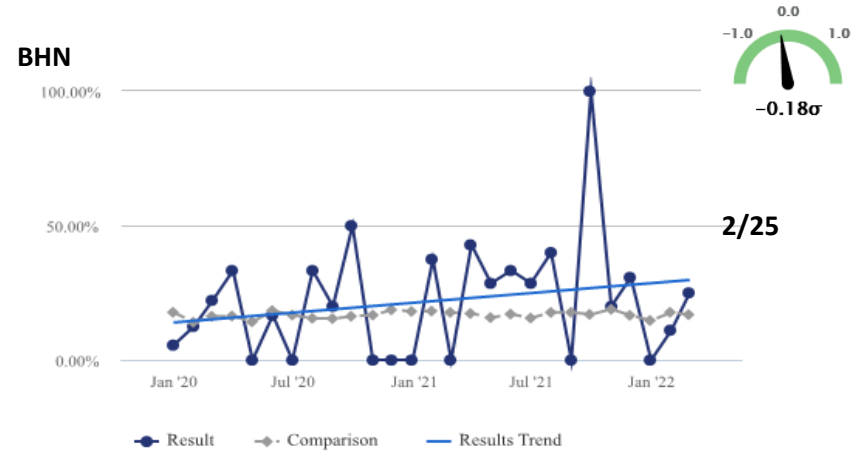
HF Medicare Readmissions 1st Q 2022

National Observed Rate 21.7%

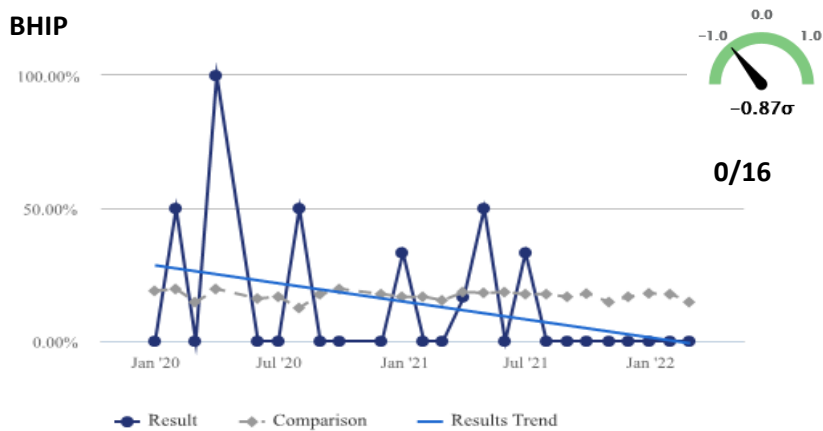
% 30 Day Readmits w/ Excludes (Any APR-DRG) - System-AllPhysicians



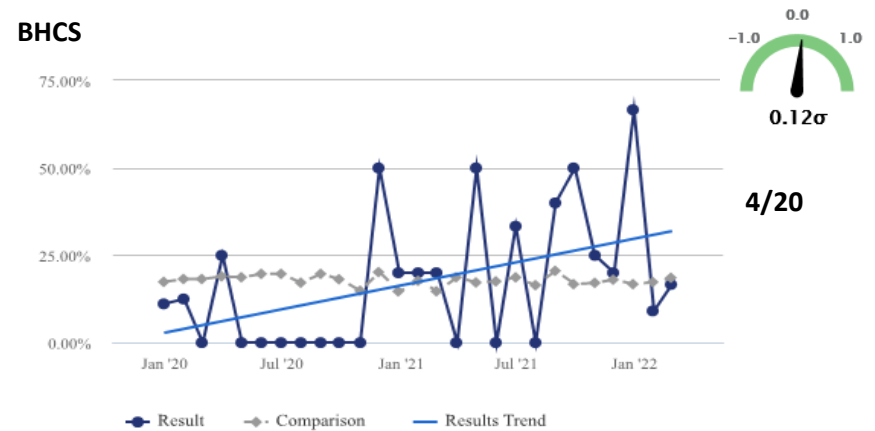
% 30 Day Readmits w/ Excludes (Any APR-DRG) - System-AllPhysicians



% 30 Day Readmits w/ Excludes (Any APR-DRG) - System-AllPhysicians

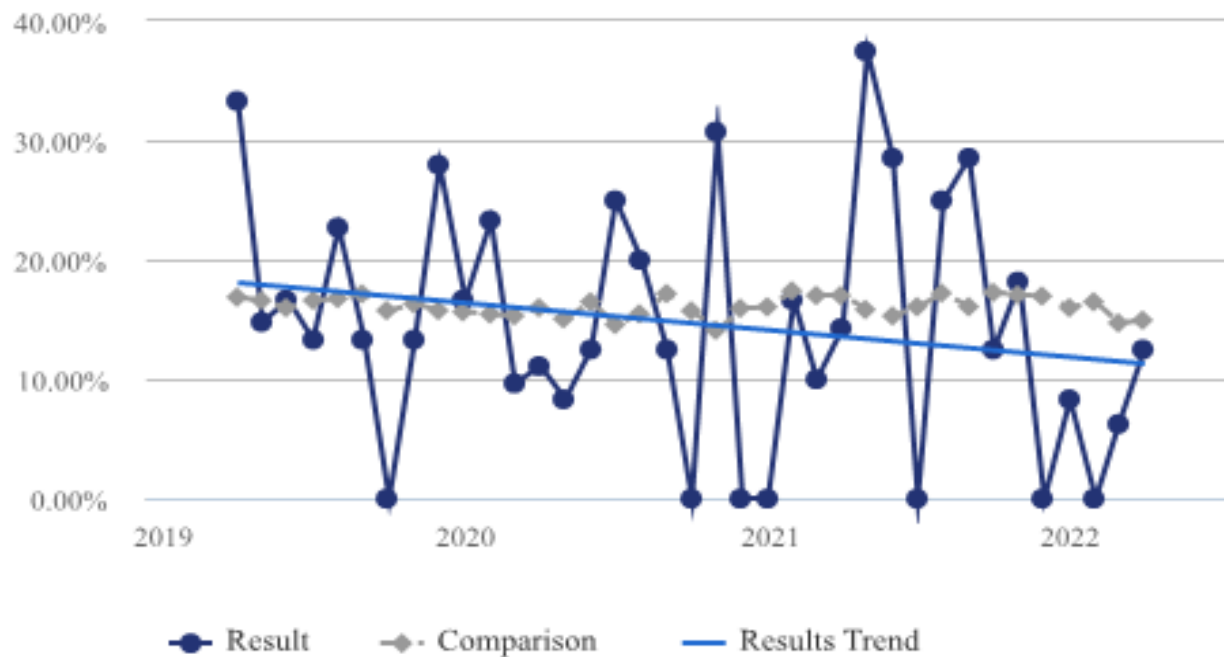


% 30 Day Readmits w/ Excludes (Any APR-DRG) - System-AllPhysicians



BH SYSTEMWIDE CHRONIC OBSTRUCTIVE PULMONARY DISEASE

% 30 Day Readmits w/ Excludes (Any APR-DRG) - System-AllPhysicians



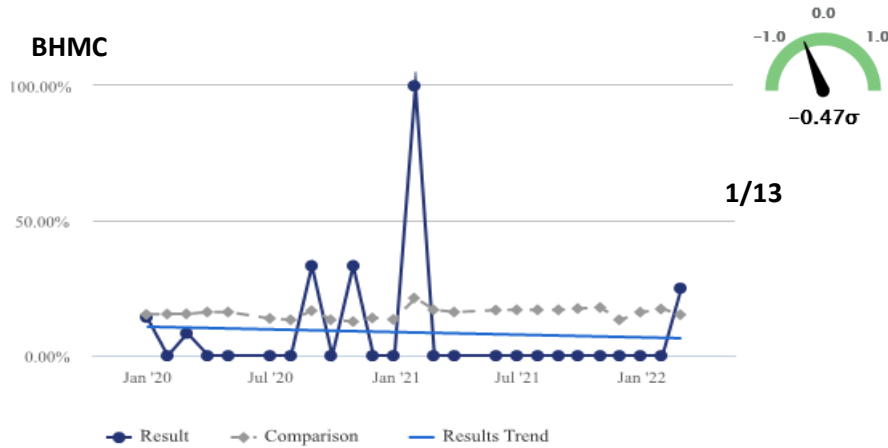
National Observed
Rate 19.6%

Apr 2019- Apr 2022
BH Observed Rate
16.2%

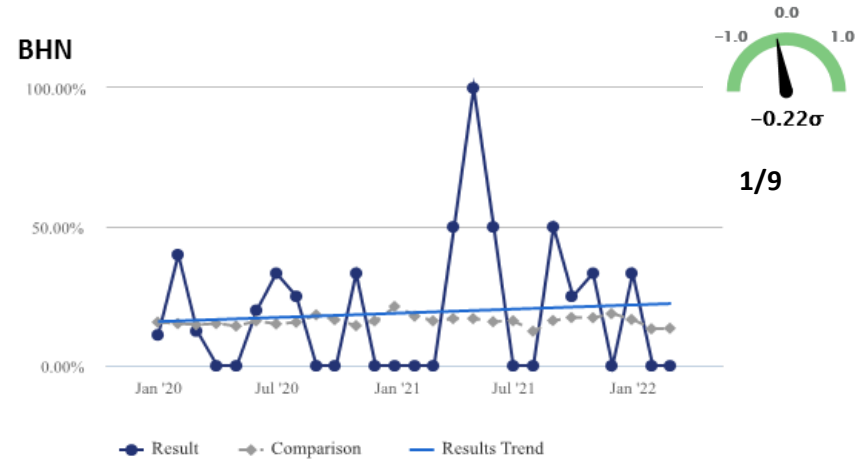
COPD Medicare Readmissions 1st Q 2022

National Observed Rate 19.6%

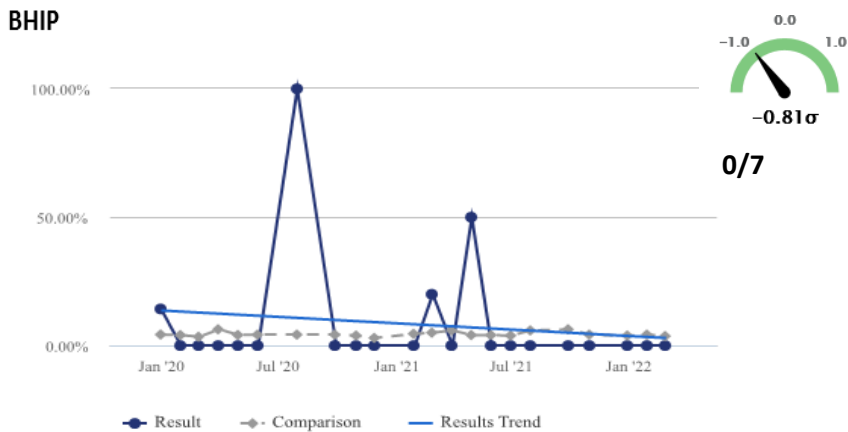
% 30 Day Readmits w/ Excludes (Any APR-DRG) - System-AllPhysicians



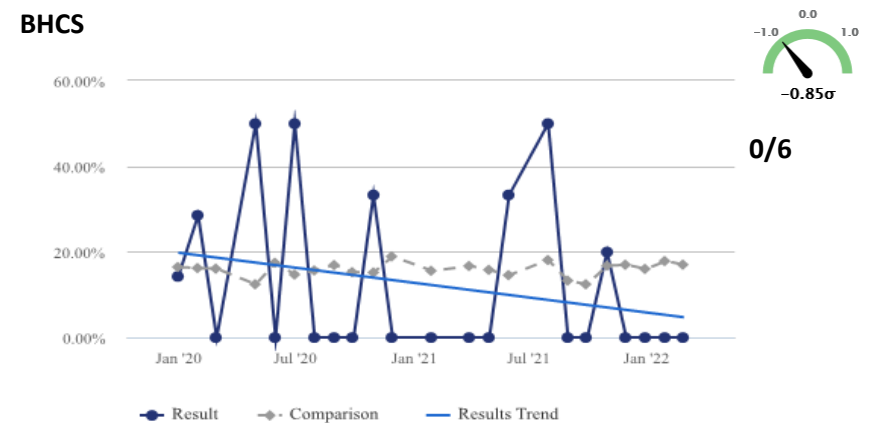
% 30 Day Readmits w/ Excludes (Any APR-DRG) - System-AllPhysicians



% 7 Day Readmits w/ Excludes (Any APR-DRG) - System-AllPhysicians



% 30 Day Readmits w/ Excludes (Any APR-DRG) - System-AllPhysicians



READMISSIONS

3% OF MEDICARE

	Medicare Budget	FY21 Potential Max Penalty	FY21 Estimated Penalty	Earned Back
BHMC	40,121,500	1,203,600	192,373	84%
BHCS	13,786,200	413,600	115,171	73%
BHN	29,727,300	891,800	62,307	93%
BHIP	12,280,900	368,400	59,870	84%
<i>Total</i>	<i>95,915,900</i>	<i>2,877,400</i>	<i>429,721</i>	<i>85%</i>