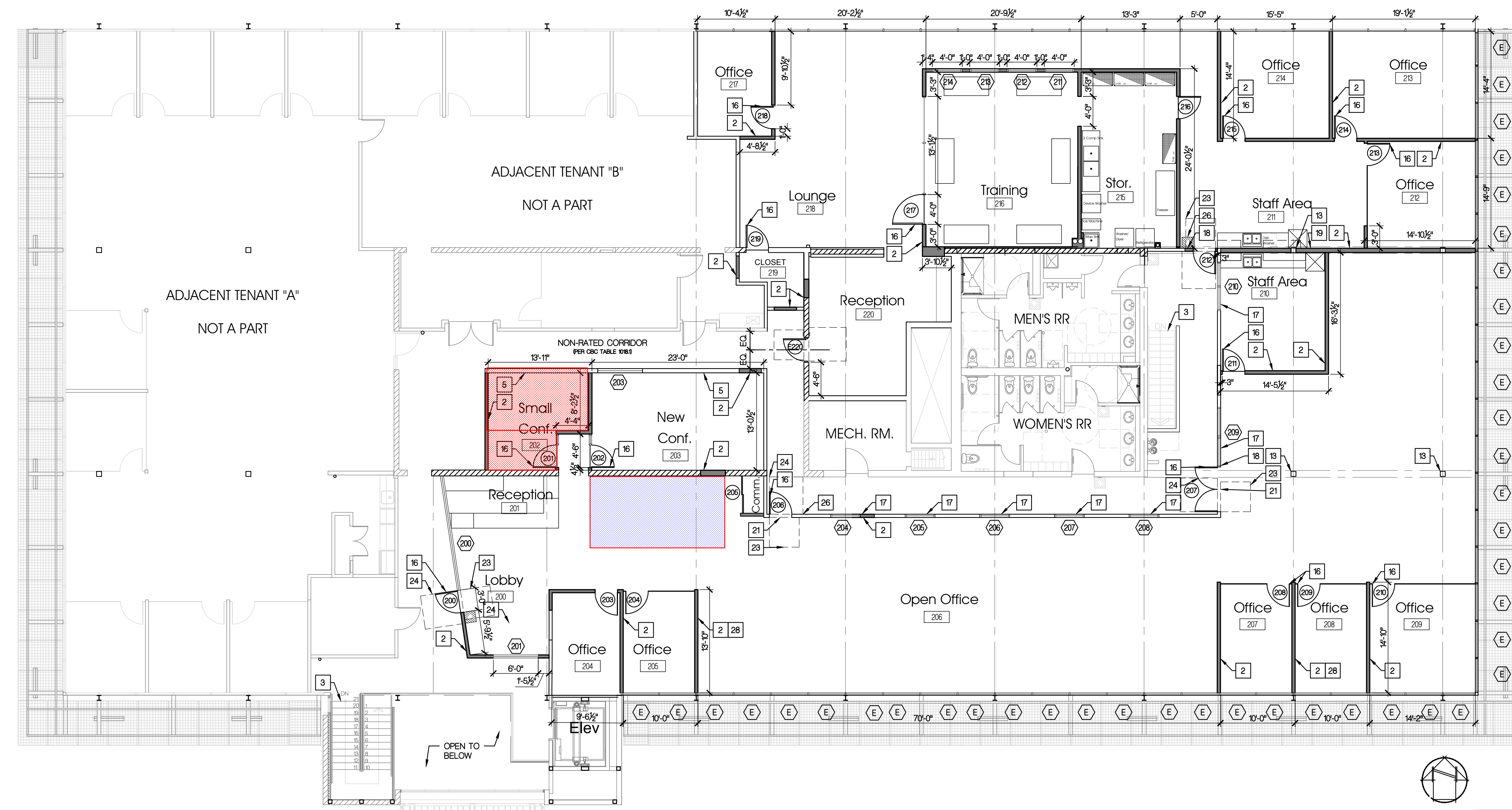


P:\DWG\2326 130 RH 2nd Floor TI\03 DWG\2326 A22 Second Floor Plan.dwg Feb 21, 2024, 4:59pm



GENERAL NOTES

ALL FRAMING DIMENSIONS ARE TO FACE OF FINISH, UNLESS OTHERWISE NOTED.

FIELD VERIFY ALL DIMENSIONS.

PROVIDE TACTILE EXIT SIGNS W/ ASSOCIATED GRADE 2 BRAILLE AS REQUIRED PER CBC 10114.10(1) AT EACH GRADE LEVEL EXTERIOR DOOR. BRAILLE PER CBC 11B-7033 & 11B-7034.

PROVIDE BACKING FOR DOOR STOPS, EXP. JOINTS, CABINETS, ETC.

CONTRACTOR TO COORDINATE DUCT PENETRATIONS.

ALIGN FINISH FACE OF NEW WALLS WITH EXISTING WALLS.

PROJECT CODE: 2326
 FILENAME: 2326 A22 Second Floor Plan.dwg
 ISSUE DATE: --

CHECKED BY: --
 APPROVALS: DATE: --

PRINT DATE: Feb 21, 2024, 4:59pm
 REVISIONS: --
 NO: DATE: COMMENTS: --



Paul Poirier + Associates
 ARCHITECTS
 156 West Alamar Ave. • Suite C • Santa Barbara, CA 93105
 telephone (805) 682-8894
 fax (805) 898-9683

SECOND FLOOR PLAN

1/8" = 1'-0"

31

KEYNOTES

#	KEYNOTE INFORMATION	DTLS	#	KEYNOTE INFORMATION	DTLS	#	KEYNOTE INFORMATION	DTLS
1	CHANGE IN FLOORING TRANSITION STRIP.		7	SWITCHGEAR PER ELECTRICAL. PROVIDE 3'-0" CLEAR SPACE IN FRONT OF EQUIPMENT		17	(N) INTERIOR WINDOW PER SCHEDULE	
2	(N) FULL HEIGHT METAL STUD WALL PER SCHEDULE-FINISH PER SCHEDULE	1/A94 8/A94	8	FIRE RISER PER MECHANICAL PROVIDE 24" x 24" MIN CLR		18	TACTILE "EXIT" SIGN W/GRADE 2 BRAILLE	22 A71
3	(E) STAIR OF 7" MAX RISERS & 11" MIN TREADS W/ HANDRAILS @ 34" HT. ABOVE NOSING, BOTH SIDES. PROVIDE 1" CONTRASTING STRIPE AT TOP AND BOTTOM TREAD NOSING. TYP. INTERIOR STAIRS SHALL HAVE THE UPPER APPROACH AND THE LOWER TREAD MARKED BY A STRIP OF CLEAR VISUAL CONTRAST. THE STRIP SHALL BE A MINIMUM 2" WIDE TO A MAXIMUM OF 4" WIDE PLACED PARALLEL TO AND NOT MORE THAN 1" FROM THE NOSE OF THE STEP OR UPPER APPROACH. THE STRIP SHALL EXTEND THE FULL WIDTH OF THE STEP OR UPPER APPROACH AND SHALL BE OF A MATERIAL THAT IS AT LEAST AS SLIP RESISTANT AS THE OTHER TREADS OF THE STAIR		9	(N) HYDRAULIC 2 STOP ELEVATOR, WITH ADA COMPLIANT CAB AND CONTROLS TO COMPLY WITH CHAPTER 30, CBC		19	2A'10" BC FIRE EXTINGUISHER WALL MOUNTED. HEIGHT +48" MAX AFF TO TOP OF FE, +27" MAX AFF TO BOTTOM OF FE.	
4	PROVIDE SOUND INSULATION IN PLUMBING WALLS AND SOFFITS		10	RECEPTION COUNTER PER SHEET AT +34"		20	NEW H-HO DRINKING FOUNTAIN PER CBC SEC 11B-2111	45 A81
5	(E) WALL TO REMAIN, PAINT FINISH		11	(E) 42" HIGH GUARDRAIL/ HANDRAIL	23 A71	21	ILLUMINATED EXIT SIGN PER ELECT DWGS.	
6	(E) MECHANICAL CHASE		12	REQUIRED DOOR CLEARANCE	ADA4	22	ACCESSIBLE ENTRY SIGNAGE	23 A12
			13	(E) STRUCTURAL COLUMN - SEMI-GLOSS PAINT FINISH		23	REQUIRED DOOR CLEARANCE 48" CLEAR FLOOR LANDING, LEVEL WITH MAX SLOPE 19% @ PUSH SIDE OF DOOR	
			14	EXISTING DOOR AND FRAME TO REMAIN, PROTECT	A23	24	REQUIRED DOOR CLEARANCE 60" CLEAR FLOOR LANDING, LEVEL W/ MAX SLOPE 19% @ PULL SIDE OF DOOR	
			15	TACTILE FLOOR NUMBER/SYMBOL AT ELEVATOR JAMB AT EACH FLOOR, TYPICAL AT +60" AFF.		25	EXISTING FLOOR, WALL & CEILING FINISHES TO REMAIN, PROTECT	
			16	(N) DOOR PER SCHEDULE	A23	26	18" x 18" CLEAR FLOOR SPACE AT TACTILE SIGNAGE (SHOWN HATCHED)	
						27	LINE OF ROOF ABOVE	
						28	CENTER (N) WALL W/ (E) COLUMN GRID (STROFRONT MULLION)	
						29	(E) CONCRETE BUILDING PODIUM TO REMAIN	
						30	(N) CHILLER PER MECHANICAL PLAN	
						31	(N) CHILLER ENCLOSURE PER A14	
						32	(E) CONCRETE FLATWORK TO REMAIN	
						33	FLOOD PROOFING PER SHEET FLD-1 & FLD-3	
						34	'GREENSCREEN' MODULAR TRELIS SYSTEM, INSTALL PER MFRS SPECS.	
						35	ALUMINUM DOOR THRESHOLD	43 A83
						36	TRELIS MOUNTING FRAME PER STRUC.	
						37	4' x 13' (VERIFY) PREFAB LUMISHADE CANTILEVER CANOPY BY "MAPES", SEE STRUCT.	
						38	(N) 42" HIGH GLASS RAILING	23 A73
						39	TACTILE "EXIT ROUTE" SIGN W/GRADE 2 BRAILLE	32 A82
						40	EXISTING ROOF ACCESS TO REMAIN	
						41		
						42		
						43		
						44		
						45		
						46		

- NEW DOOR PER SCHEDULE SHEET A23
- NEW WINDOW PER SCHEDULE SHEET A28

WALL LEGEND

REFER TO SHEET A93 & A94 FOR TYPICAL DETAILS

W 1	(N) FULL HT WALL W/ 6" 20 GA MTL STUDS @ 16" OC, TO CEILING, 5/8" TYPE 1 GWB BOTH SIDES, WITH R-19 PAPER FACED FIBERGLASS INSULATION. GWB TO BE WR @ WET LOCATIONS (KITCHEN, JANITOR & RRI). PAINT FINISH UNO. SEE DETAIL 25/A91 (DIETRICH 600 USTE OR EQUAL)	
W 2	(N) FULL HT WALL W/ 3 5/8" 25 GA MTL STUDS @ 16" OC, TO CEILING, 5/8" TYPE 1 GYP BD BOTH SIDES, W/ R-13 PAPER FACED FIBERGLASS INSULATION. GWB TO BE WR @ WET LOCATIONS (KITCHEN, JANITOR & RRI). PAINT FINISH UNO. SEE DETAIL 25/A91 (DIETRICH 362 USTN OR EQUAL)	
W 3	FRAMELESS GLASS TO +8'-0"	
W 4	(N) FULL HT WALL W/ 6" 20 GA MTL STUDS @ 16" OC, CMU WALL W/ 5/8" GWB ON INTERIOR SIDE & INSULATED METAL SIDING ON EXTERIOR SIDE	23 A81
W 5	(N) GLASS CURTAIN WALL KAWNEER 451T W/ SOLARBAN 60, LOW E GLAZING W/ CLEAR ANODIZED FINISH.	
EW 1	EXISTING CMU WALL TO REMAIN. PAINT FINISH, WHERE EXPOSED	
EW 2	(E) METAL STUD WALL TO REMAIN, PATCH OR REPLACE GYP BD AS REQD, NEW PAINT FINISH	
EW 3	(E) ALUM GLASS CURTAIN WALL, SINGLE GLAZED TO REMAIN	

LEGEND

- NEW DOOR PER SCHEDULE SHEET A23
- NEW WINDOW PER SCHEDULE SHEET A28

130 Robin Hill Road
 Interior Tenant Improvements
 Owner: **SBCERS**
 130 Robin Hill Road, Suite 100
 Goleta, CA 93117

A2.2
 SECOND FLOOR PLAN