

7.1 READMISSIONS REDUCTION PROGRAM

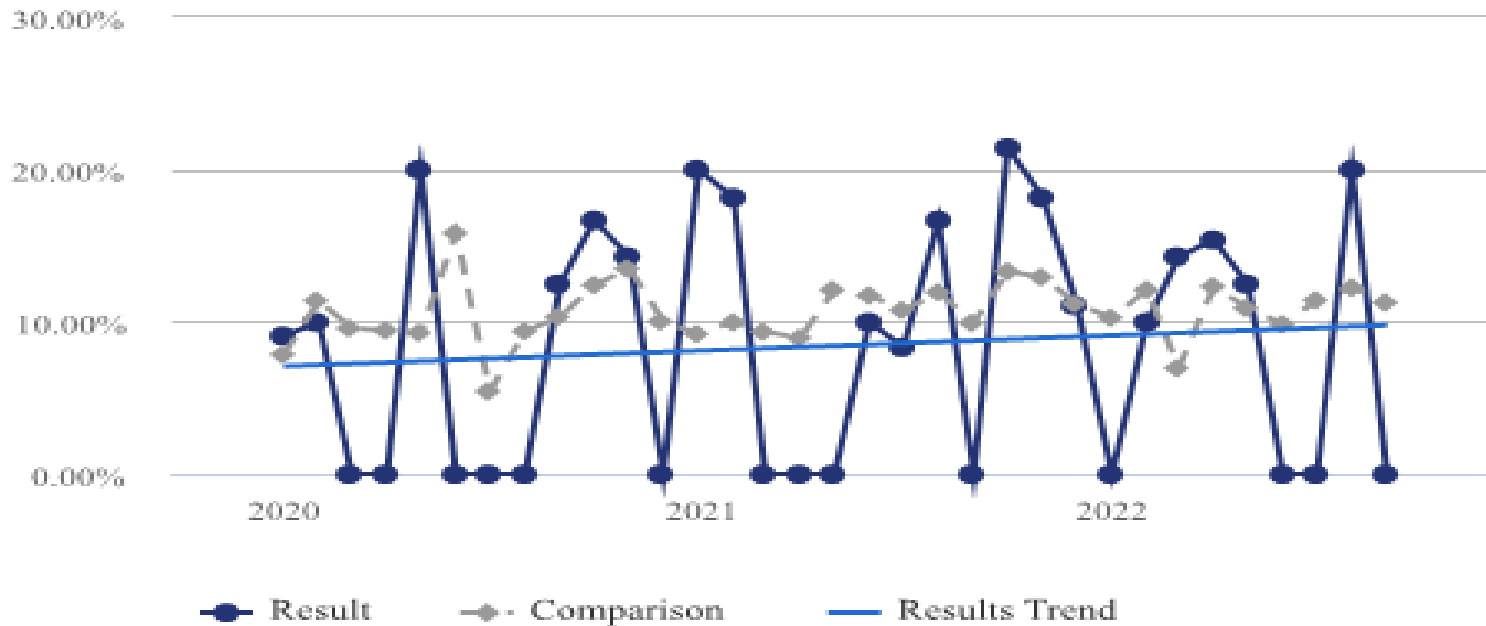


BH SYSTEMWIDE ACUTE MYOCARDIAL INFRACTION JAN 2020- SEPT 2022

% 30 Day Readmits w/ Excludes (Any APR-DRG) - System-AllPhysicians

National Observed Rate 15.7%

BH Observed Rate 9.03%



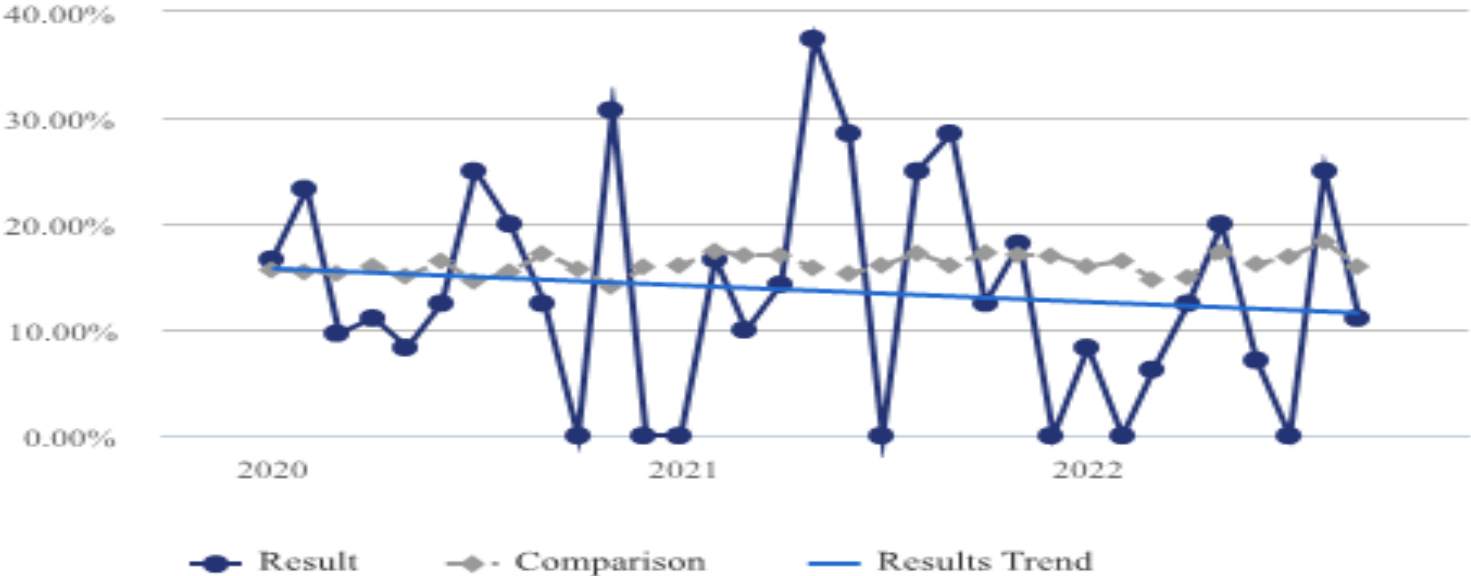
BH SYSTEMWIDE HEART FAILURE JAN 2020- SEPT 2022

% 30 Day Readmits w/ Excludes (Any APR-DRG) - System-AllPhysicians



BH SYSTEMWIDE CHRONIC OBSTRUCTIVE PULMONARY DISEASE JAN 2020- SEPT 2022

% 30 Day Readmits w/ Excludes (Any APR-DRG) - System-AllPhysicians

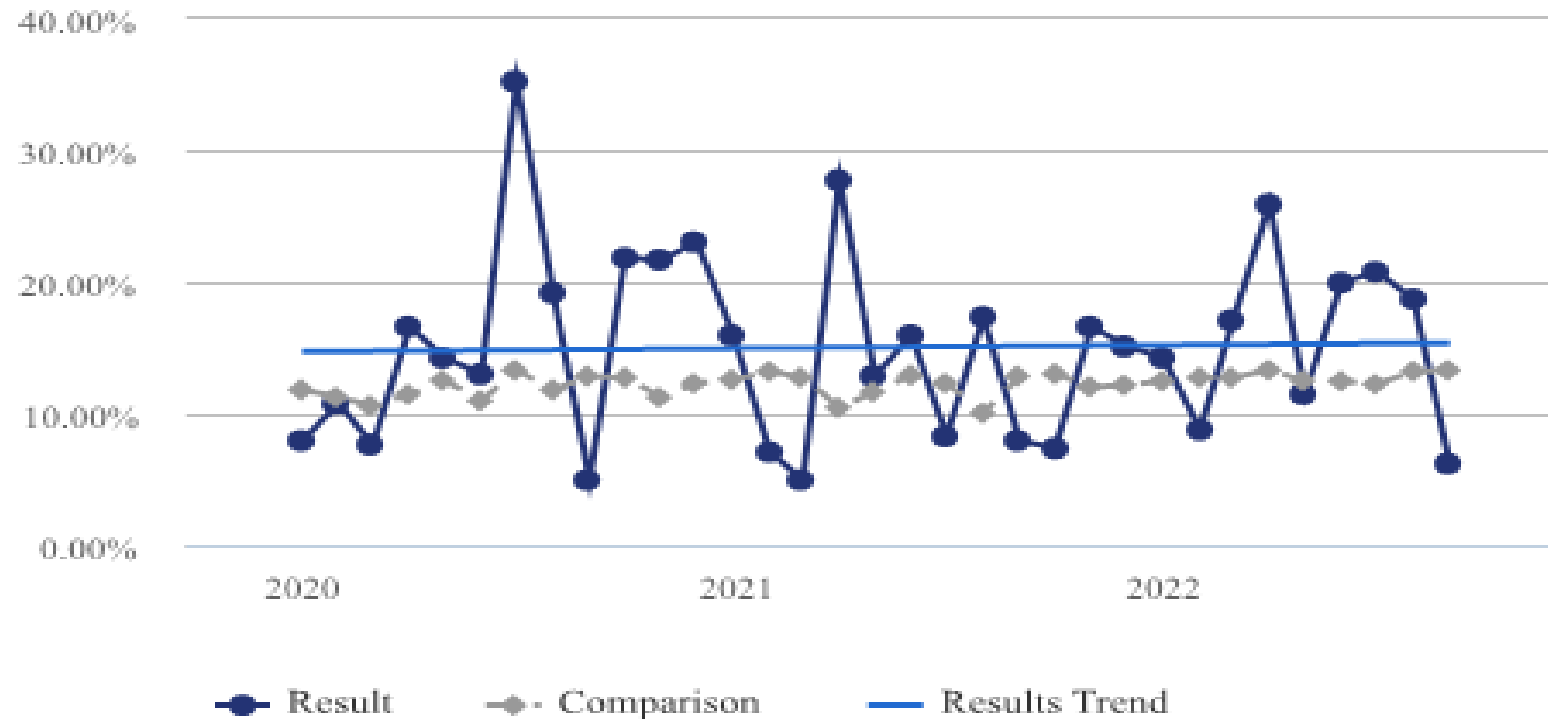


National Observed Rate 19.6%

BH Observed Rate 14.52%

BH SYSTEMWIDE PNEUMONIA JAN 2020- SEPT 2022

% 30 Day Readmits w/ Excludes (Any APR-DRG) - System-AllPhysicians



National Observed Rate 16.6%

BH Observed Rate 14.44%

CMS RRP

COST OF READMISSIONS - 3% OF MEDICARE

	FY22 Potential Max Penalty	FY22 Penalty (2019 performance)	FY21 Penalty	FY22 Penalty	FY23 Penalty
BHMC	1,203,600	177,921	0.79%	0.9%	0.72%
BHCS	413,600	74,701	0.78%	0.85%	0.17%
BHN	891,800	54,733	0.27%	0.37%	0.32%
BHIP	368,400	54,150	0.78%	0.8%	0.42%

CMS PUBLIC REPORTING

FOR JULY 2018- DEC 2019 & JULY 2020- JUNE 2021

	COPD State 20.2% Nation 19.7%	PN State 17% Nation 17%	HF State 22.6% Nation 21.1%	AMI State 16.1% Nation 14.6%	Joint Replacement State 4.1% Nation 4.0%
BHMC	19.34% No different than the national rate	16.5% No different than the national rate	22.67% No different than the national rate	16.45% No different than the national rate	4.4% No different than the national rate
BHCS	17.78% No different than the national rate	16.27% No different than the national rate	21.01% No different than the national rate	Number of cases too small	Number of cases too small
BHIP	19.29% No different than the national rate	17.01% No different than the national rate	20.8% No different than the national rate	Number of cases too small	4.06% No different than the national rate
BHN	17.66% No different than the national rate	16.13% No different than the national rate	23.09% No different than the national rate	16.16% No different than the national rate	4.34% No different than the national rate

AHCA PUBLIC REPORTING

15-DAY OVERALL READMISSION RATE

OCTOBER 2020 THROUGH SEPTEMBER 2021

	State 6.42%
BHMC	6.73% (<i>As Expected</i>)
BHCS	6.54% (<i>As Expected</i>)
BHIP	6.12% (<i>As Expected</i>)
BHN	7.12% (<i>Higher than Expected</i>)

READMISSIONS ACTION PLAN

Discharge Process

- D/C education to patient & caregiver
- Follow up appointment made by CM
- Discharge med packets: ABX, Rescue inhaler and Medrol dose packs.

High Risk Readmissions

- Readmission Assessments implemented in Cerner.
- High Risk Daily census sent to CM staff daily.
- Implementation of discharge disposition with readmission.
- CM & CMO Disease specific readmissions teams.
- Intense Analysis data drill down of opportunities.

Transition of Care

- Readmission follow up calls.
- CM referrals to Pop Health via Ensocare.
- CHF & COPD task forces appointment center for follow up care.
- Business cards for appointment center for BHPG primary and specialty care referrals.

